



City of North Las Vegas

Your Community of Choice

North Las Vegas Facts

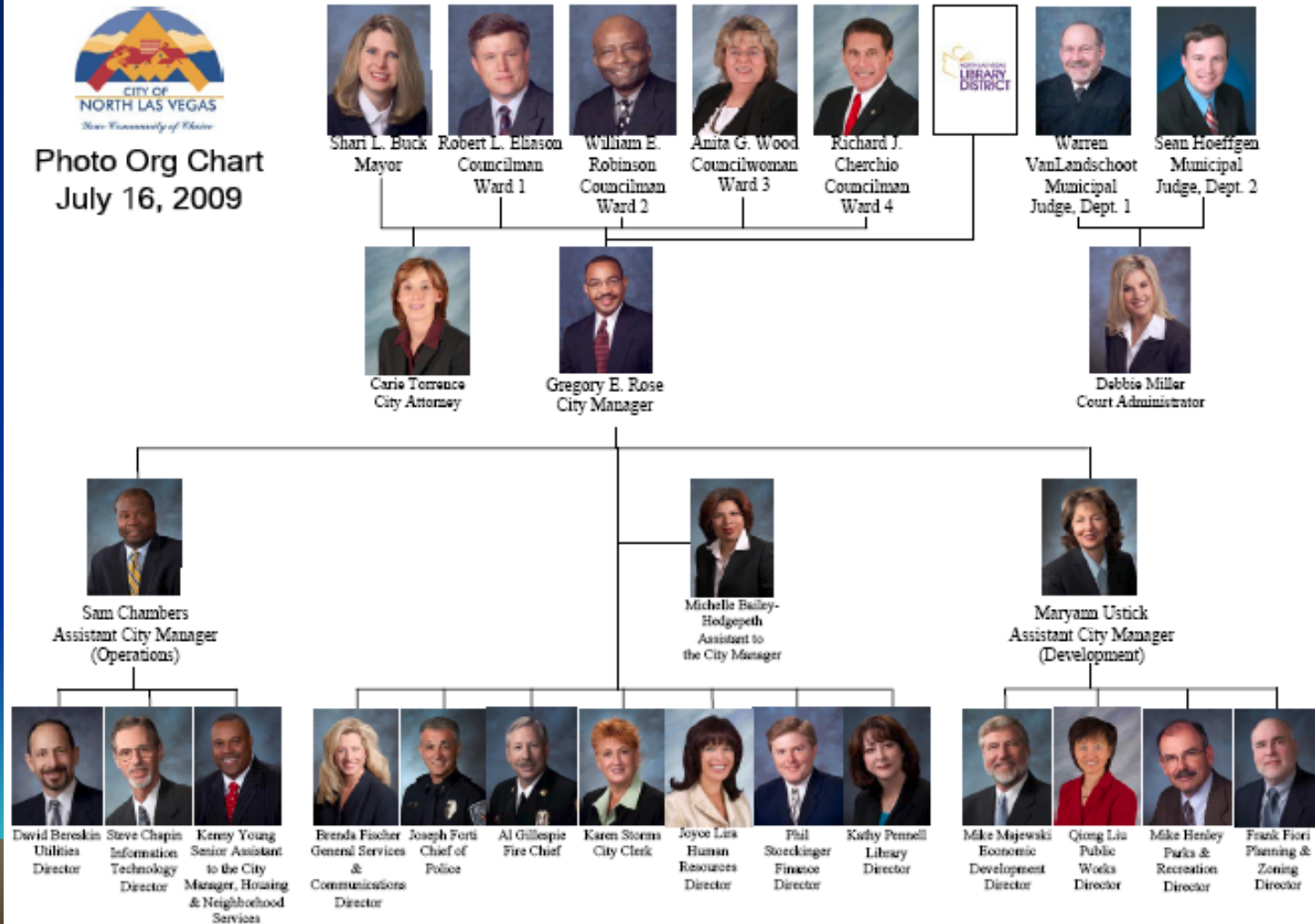


- North Las Vegas was incorporated in 1946
- North Las Vegas encompasses 98.4 square miles in Clark County
- North Las Vegas is the fourth fastest growing large city in the America
- Current population in December 2008 was 216,672
- Estimated population in 2035 is 586,548

Organizational Chart



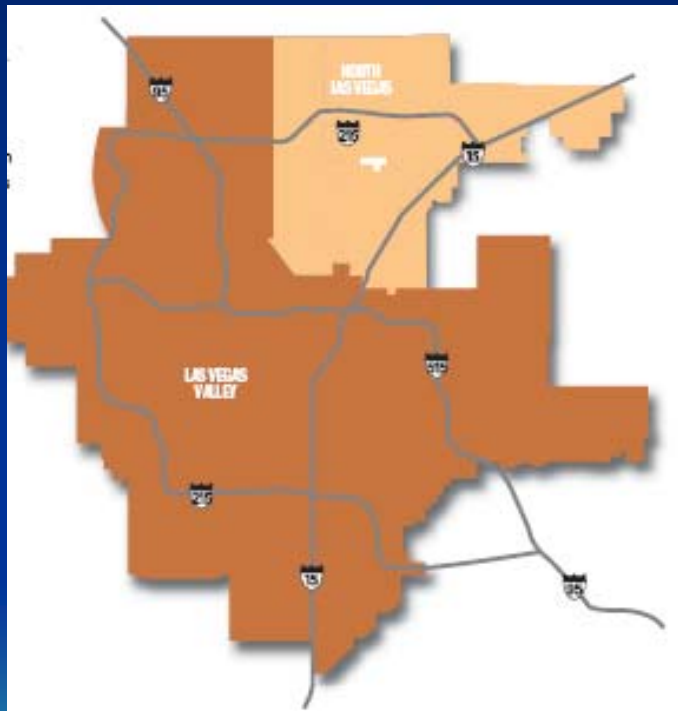

Photo Org Chart
 July 16, 2009





Population : Growth Trend

Since 1998, the City has grown by 129.0% with an average annual growth rate of 8.7%

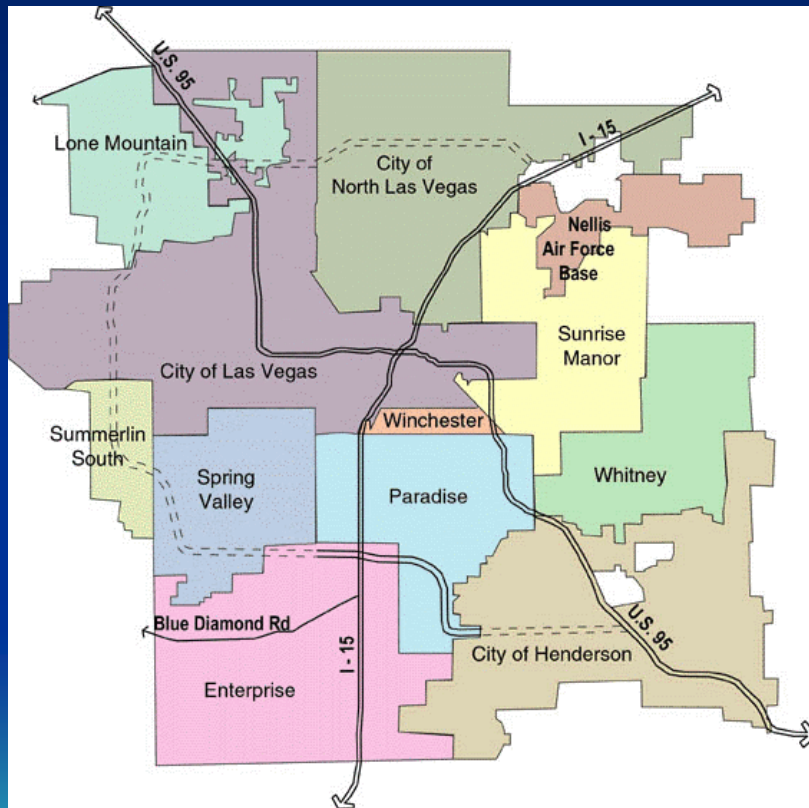


| Year | Population | % Increase |
|-------------|----------------|-------------|
| 1998 | 94,480 | 6.7% |
| 1999 | 101,841 | 7.8% |
| 2000 | 115,488 | 13.4% |
| 2001 | 125,196 | 8.4% |
| 2002 | 137,691 | 10.0% |
| 2003 | 147,877 | 7.4% |
| 2004 | 168,081 | 13.7% |
| 2005 | 190,150 | 13.1% |
| 2006 | 202,520 | 6.5% |
| 2007 | 215,026 | 6.2% |
| 2008 | 216,664 | 0.8% |

Source: U.S. Census Bureau
City of North Las Vegas Demographer



2008 Population : Clark County, Nevada



| | |
|------------------------------------|------------------|
| Clark County: | 1,986,146 |
| Cities: | |
| City of Henderson: | 272,063 |
| City of Las Vegas: | 599,087 |
| City of North Las Vegas: | 216,672 |
| Subtotal | 1,087,822 |
| Unincorporated Urban Areas: | 828,615 |
| Subtotal | 828,615 |
| Outlying Areas: | |
| City of Boulder City: | 16,840 |
| City of Mesquite: | 19,939 |
| Unincorporated Rural Areas: | 32,930 |
| Subtotal | 69,709 |

Source: 2009 Las Vegas Perspective



Population : Demographics

North Las Vegas is a culturally diverse city, as indicated by the results of Census 2000

| | North Las Vegas | Clark County | Nevada | USA |
|--|-----------------|--------------|--------|-------|
| One Race: | 95.3% | 95.8% | 96.2% | 97.6% |
| White | 55.9% | 71.6% | 75.2% | 75.1% |
| Black or African American | 19.0% | 9.1% | 6.8% | 12.3% |
| American Indian and Alaska Native | 0.8% | 0.8% | 1.3% | 0.9% |
| Asian | 3.2% | 5.3% | 4.5% | 3.6% |
| Native Hawaiian & Other Pacific Islander | 0.5% | 0.5% | 0.4% | 0.1% |
| Some Other Race | 15.8% | 8.6% | 8.0% | 5.5% |
| Two or more races | 4.7% | 4.2% | 3.85% | 2.4% |
| Hispanic or Latino (of any race) | 37.6% | 22.0% | 19.7% | 12.5% |

Source: U.S. Census Bureau, Census 2000

Workforce: Labor Statistics



Las Vegas MSA / Clark County – June 2009

- Labor Force 1,011,704
- Unemployed 124,893
- Unemployment Rate 12.3%
- U.S. Unemployment Rate 9.7%

Source: www.detr.state.nv.us.

Transportation – Trucking Distances



| Distance From North Las Vegas | |
|-------------------------------|-------|
| City | Miles |
| Albuquerque | 586 |
| Anaheim | 245 |
| Denver | 758 |
| Houston | 1,467 |
| Los Angeles | 272 |
| Phoenix | 287 |
| Portland | 996 |
| Reno | 445 |
| Riverside | 207 |
| Salt Lake City | 419 |
| San Francisco | 570 |
| San Diego | 336 |
| Seattle | 1,180 |

Transportation – Airport



McCarran International Airport

- 44,074,707 passengers in 2008
- 47,729,527 passengers in 2007
- 123,805 scheduled passengers /day in 2008
- 6th busiest airport in North America
- Every major U.S. city has a non-stop flight



Quality of Life – Housing Costs

Metro Las Vegas Housing Facts

| | |
|--|-----------|
| Median New Home Price, Jan-May 2009 | \$212,990 |
| Median Resale Home Price, Jan-May 2009 | \$130,000 |

Average Apartment Rental Rates/Month

| | |
|-----------|-------|
| 1 Bedroom | \$781 |
| 2 Bedroom | \$955 |

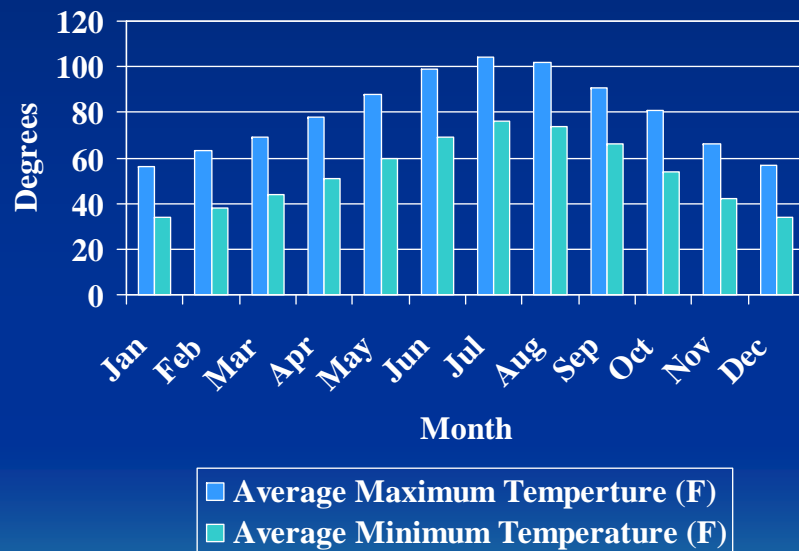
Sources: Southern Nevada Home Builders Association, www.snhba.com & www.homebuildersresearch.com
www.apartmentratings.com



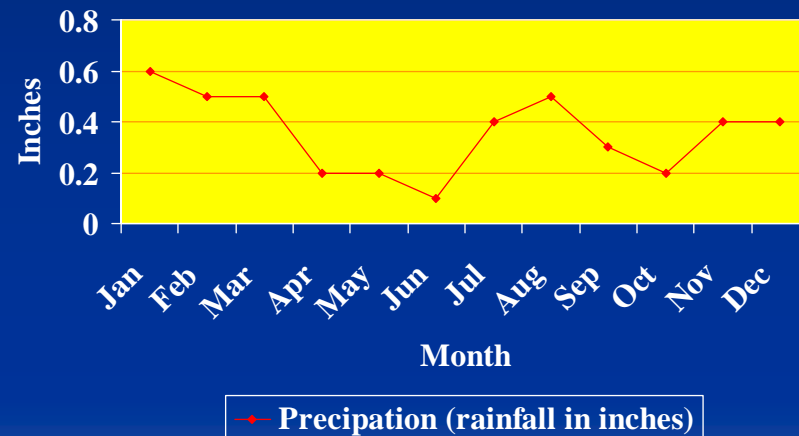
Quality of Life – Climate



Average Monthly Temperature



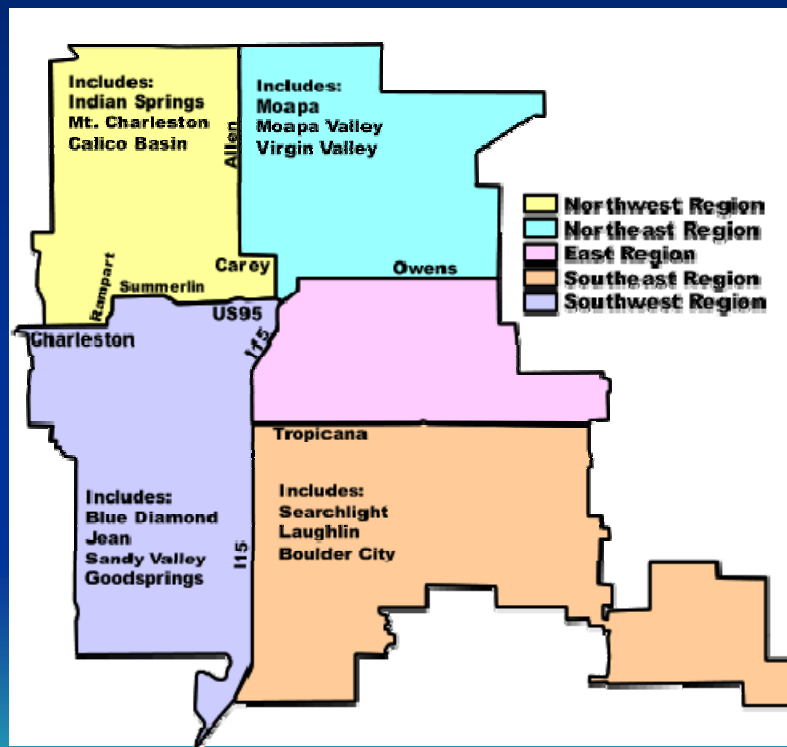
Average Rainfall





Quality of Life – Education

Clark County School District - www.ccsd.net



- 5th largest school district in the United States (347 Schools)
- 2008 / 2009 enrollment: 311,240 students
- Over 18,000+ teachers are on staff
- 7 new schools and 4 replacement schools opened for 2008 - 2009
- Magnet schools (Liberal arts to Technical Studies)
- 100% Computer Instruction (K-5)
- 93% Internet access (K-12)

Southern Nevada is also home to 38 private schools with enrollment over 100 students.



Quality of Life – Education

University of Nevada Las Vegas, www.unlv.edu

| | |
|------------------|--|
| Enrollment: | More than 27,900 students |
| Degree Programs: | More than 200 undergraduate, master's and doctoral degree programs |
| Faculty: | Approximately 850 faculty members |

College of Southern Nevada, www.csn.edu

| | |
|------------------|---|
| Enrollment: | Nearly 40,000 students |
| Degree Programs: | More than 200 career fields, 80 associate degree and certificate programs |
| Locations: | 3 main campuses and 12 academic centers Cheyenne Campus – North Las Vegas Charleston Campus – Las Vegas Henderson Campus - Henderson |

Southern Nevada is also home to 17 private colleges and universities



Cost of Doing Business – Tax Structure

Nevada's tax structure continues to be one of the least burdensome in the country, allowing both business and employees to flourish.

- \$ NO Corporate Income Tax**
- \$ NO Personal Income Tax**
- \$ NO Unitary, Franchise, Inventory Tax**
- \$ NO Inheritance, Estate and/or Gift Tax**
- \$ NO Chain Store Tax**



Cost of Doing Business – Sales Tax

Clark County Sales Tax ⇨ 8.1%

| | |
|--------------|--|
| 2.00% | Sales Tax |
| 2.60% | Local School Support Tax |
| 0.50% | Basic City - County Relief Tax |
| <u>1.75%</u> | Supplemental City - County Relief Tax |
| 6.85% | Minimum Tax Rate |
| | |
| 0.25% | Police Protection |
| 0.50% | Public mass transportation & construction of roads |
| 0.25% | Control of floods |
| <u>0.25%</u> | Infrastructure |
| 8.1% | Clark County Sales Tax |



Cost of Doing Business – Property Tax

In 1979, the Nevada State Legislature limited the property tax by law to \$3.64 for each \$100 assessed valuation and exempted all household goods owned by a single family from property taxes. In 1981, the Nevada State Legislature further altered the state's property tax laws by changing the assessment procedure from the market value of real property to a formula based on replacement costs minus depreciation using actual age.

The statewide average ratio of assessed valuation to taxable value is 35% as fixed by law.



Cost of Doing Business – Property Tax

In Clark County there are 108 tax districts.

Example of property tax calculation:

$$\begin{array}{r} \text{Taxable Value: } \$100,000.00 \\ \quad \times \quad \quad \quad \underline{35\%} \\ \hline \text{Assessed Value: } \$ 35,000.00 \\ \quad \times \quad \quad \quad \underline{.0261^*} \\ \hline \text{Property Tax Due: } \$ \quad 913.50 \end{array}$$

*2.61 x \$100 assessed valuation...will vary depending on local tax district



Cost of Doing Business – Property Tax

In North Las Vegas there are 6 tax districts.

| Tax District | District Name | FY 2007-08 Tax Rate | FY 2008-09 Tax Rate | FY 2009-10 Tax Rate |
|--------------|---------------------------------------|---------------------|---------------------|---------------------|
| 250 | North Las Vegas City | 3.3552% | 3.3552% | 3.3555% |
| 253 | North Las Vegas Redevelopment | 3.3552% | 3.3552% | 3.3555% |
| 254 | North Las Vegas City Library | 3.3675% | 3.3638% | 3.3655% |
| 255 | North Las Vegas Redevelopment Library | 3.3552% | 3.3552% | 3.3555% |
| 256 | North Las Vegas Redevelopment Library | 3.3552% | 3.3552% | 3.3555% |
| 257 | North Las Vegas City 911 | N/A | 3.3630% | 3.3644% |



Cost of Doing Business — Modified Business Tax

An excise tax will be assessed on each employer with respect to employment. An employer may deduct from the total amount of wages reported and upon which the excise tax is imposed any amount that is paid by the employer for health insurance or a health benefit plan.

SB429 changes the tax rate for Modified Business Tax (MBT) as well as creating a tiered system. If the sum of all taxable wages, after health care deductions, paid by the employer does not exceed \$62,500 for the calendar quarter, the amount of tax is 0.5% of the sum of those wages (0.005). If the sum of all the wages paid by the employer exceeds \$62,500 for the calendar quarter, the tax is \$312.50 plus 1.17% of the amount the wage exceeds \$62,500. For example: if the sum of all wages for the 12/09 quarter is \$101,000. The tax is \$312.50 plus \$450.45 ($0.0117 \times \$38,500$ which is the amount exceeding \$62,500) = total tax due of \$762.95. These changes are effective July 1, 2009 and expire June 30, 2011. No changes were made to the definition of Financial Institutions or the tax rate for Financial Institutions which remains at 2%.

The tax for each calendar quarter is due on the last day of the quarter.



Cost of Doing Business – Unemployment Tax

The unemployment insurance tax rate for new employers is 2.95 percent on the first \$26,600 of salary paid to an employee.

After an employer has been in business for 3 1/2 to 4 years, the tax rate will be determined by previous experience with unemployment, and can range from as low as .25 percent to a maximum of 5.4 percent.



Cost of Doing Business – Workers' Compensation

- Nevada law requires all business owners in the State of Nevada to obtain and maintain workers' compensation coverage.
- Since January 1, 2000, Nevada no longer provides workers' compensation through a State fund.
- **Employers may obtain workers' compensation insurance from a private insurance company** authorized to provide workers' compensation in Nevada by the Division of Insurance (DOI).
- If qualified, an employer **may be self-insured** through an approval process overseen by the DOI.
- For smaller businesses interested in becoming self-insured, there are **associations of self insured employers** which are groups of employers (generally in the same type of business) which are members of the association.



Cost of Doing Business – Workers' Compensation

- Workers' Compensation premiums varies depending upon the correct NCCI classification for the business. Each classification is assigned a rate (or loss cost) that is used to develop policy premium. The classification rate reflects the exposure to workplace injury common to similar employers.
- **The book price, or manual rate, is the cost of workers compensation insurance per \$100 of payroll.** A single price for a state does not exist. Premiums are also by the business' Experience Rating, which used the employer's past "experience" (losses) to project future losses.
- Per the Nevada Administrative Code (NAC 616A.200, "**Payroll**" means for the purpose of computing premiums for workers' compensation to be paid by an employer who is not a self-insured employer or a member of an association of self-insured public or private employers, the **first \$36,000** paid by each employer to any one employee during a policy year includes, without limitation: salary, commissions, piecework, incentive pay, vacation pay, sick pay, holiday pay, wages, bonuses, overtime, termination pay, travel time pay, tips collected, tool allowance or rental, reasonable market value of board, rent, housing or lodging, cafeteria plan benefits, and all deemed wages defined by provisions of chapters 616A to 617 inclusive, of NRS.



Cost of Doing Business – Utilities / Services

Electric –

Supplier: NV Energy
Distributor: NV Energy

Commercial Rates (<300kW)

| | |
|--------------------------|---------------|
| Customer Charge | \$18.00 |
| Facilities Charge | \$3.54/kW |
| Demand Charge | \$2.00/kW |
| Energy Charge | \$0.08314/kWh |
| Deferred Recovery Charge | \$0.00000/kWh |

Industrial Rates (>1000 kW)

| | |
|------------------------------------|-----------------|
| Customer Charge | \$167.70/bill |
| Facilities Charge | \$2.91/kW |
| Deferred Recovery Charge | \$0.00000/kWh |
| Power Factor Charge (below 80%) | \$0.00140/kVarh |

Seasonal Electric Charges:

| | | |
|------------|--------|-----------|
| Summer | | |
| On-Peak | \$8.40 | \$0.10731 |
| Mid-Peak | \$0.63 | \$0.09346 |
| Off-Peak | \$0.00 | \$0.06665 |
| Non-Summer | \$0.50 | \$0.06978 |

*Rates subject to change. Contact NV Energy at (702)402-5225 or visit their website at www.nvenergy.com

Cost of Doing Business – Utilities / Services



Natural Gas –

Supplier: Transwestern Pipeline & Kern River Pipeline
Local Distributor: Southwest Gas Corporation

Industrial Rates (effective 2/1/09)

| | | |
|-----------------------------|--------------------------------|--|
| Small Customer: | \$21.50 + \$1.03371 per therm | up to 600 therms/yr |
| Medium Customer | \$30.00 + \$0.98316 per therm | 600 to 7,200/yr |
| Large Customer | \$150.00 + \$0.92966 per therm | 7,200 to 180,000/yr |
| Transport Eligible Customer | \$850.00 + \$0.81691 per therm | over 180,000/yr plus \$.023477 demand charge* |

*Demand charge is revised monthly



Cost of Doing Business – Utilities / Services

Water –

Supplier: City of North Las Vegas

Source: Lake Mead wells

Industrial Rates (2 inch meter)

Monthly Service Charge: \$61.80

Consumption Rate/1,000 gallons \$2.53



City of North Las Vegas

Your Community of Choice

www.cityofnorthlasvegas.com

Economic Development Department
2225 Civic Center Drive, Suite 224
North Las Vegas, NV 89030
702/633-1523